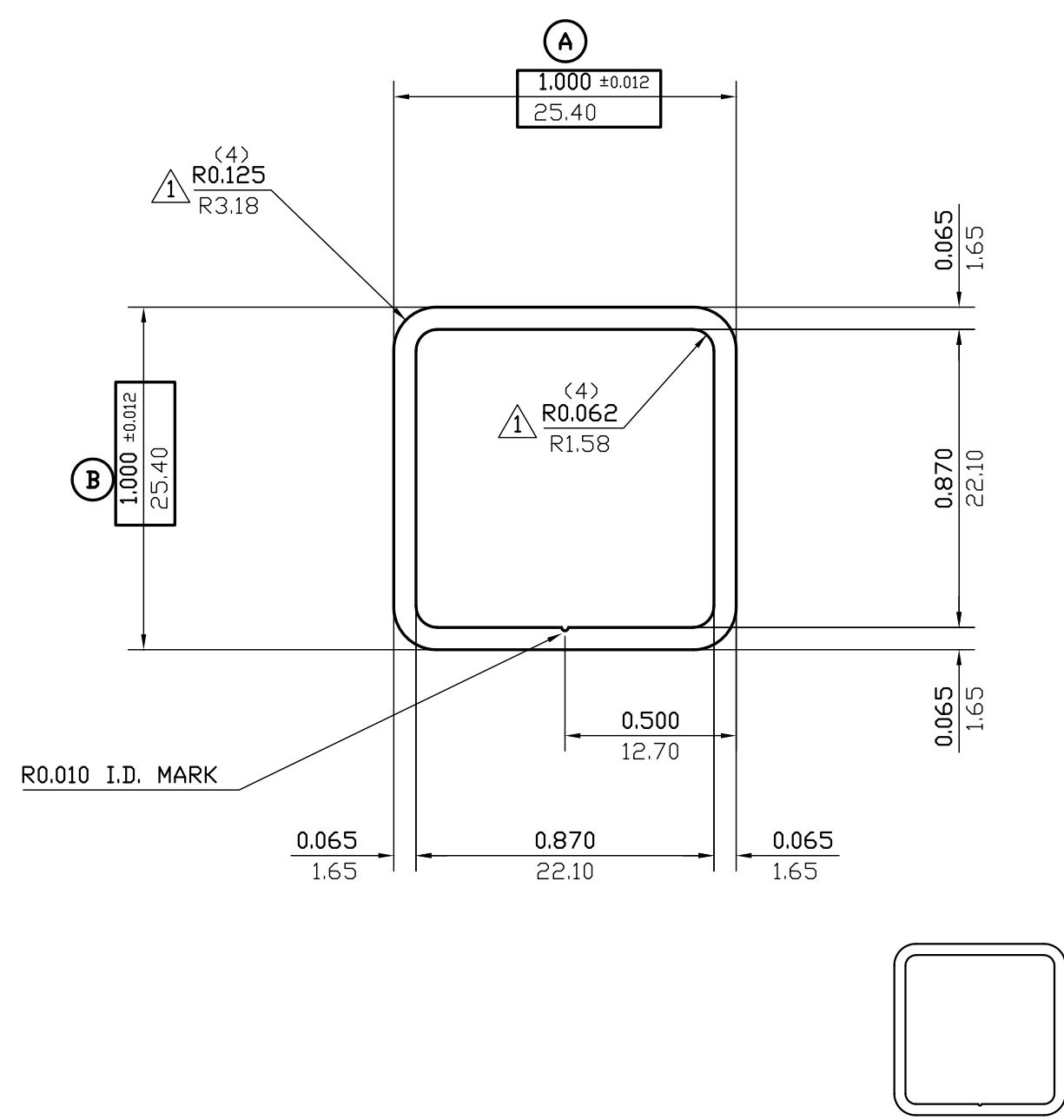


NOTE: BREAK ALL CORNERS WITH 0.015" (.38 MM) RADIUS UNLESS OTHERWISE NOTED. STANDARD TOLERANCES TO APPLY UNLESS OTHERWISE SPECIFIED.

| | | |
|-------------------|--------------------------------|---------------------------|
| CUSTOMER PART No. | CAN ART STD. | DIE No. EH05180 |
| DESCRIPTION | 1" x 1" x 0.065" THK. SQ. TUBE | PROPOSAL No. H-964 |



(C)
WALL THICKNESS 0.065 (1.65) EXCEPT AS SHOWN

| DATE | REV | DESCRIPTION | BY | | |
|-----------|-------|------------------------------|-----------|---------------|--------------------|
| 03/13/23 | 4 | REMOVED ALLOY | JASON | | |
| 06/19/02 | 3 | ADDED ACTUAL SIZE OF PROFILE | P.M. | | |
| EST. AREA | 0.233 | IN. ² | EST. AREA | 150 | MM. ² |
| EST. WT. | 0.275 | LBS/FT. | EST. WT. | 0.409 | KG/M. |
| EST. PER. | 7.170 | IN. | EST. PER. | 182.1 | MM. |
| OUT PER. | 3.785 | IN. | OUT PER. | 96.1 | MM. |
| C.C.D. | 1.311 | IN. | C.C.D. | 33 | MM. |
| FACTOR | 26 | FINISH | M/F | ALLOY & TEMP. | |
| CKD BY | | SCALE | 2:1 | DWN BY | G.M. DATE 11/23/88 |

CAN ART

ALUMINUM EXTRUSION INC.

85 PARKSHORE DRIVE
 BRAMPTON, ONT L6T 5M1
 TEL. NO. (905) 791-1464
 FAX NO. (905) 791-9151
 E-MAIL: canart@canart.com

THIS DRAWING IS NOT NECESSARILY A COPY OF YOUR ORIGINAL. PLEASE APPROVE DIMENSIONS AND TOLERANCES INDICATED. CAN ART ASSUMES NO RESPONSIBILITY EITHER TECHNICAL OR LEGAL FOR HAVING THIS SHAPE MADE. THE CUSTOMER AGREES TO FULLY PROTECT CAN ART ALUMINUM FROM CLAIMS OF OTHERS RESULTING FROM THIS SHAPE.

SIGNED: _____ DATE: _____